

Part No. 79212EX  
Revised June 1996

# *Bag-In-A-Box Oil Pump System*

## Instruction Manual

Model #2245EX and Model #2246EX





 **GOLD MEDAL**®


**FUNFOOD EQUIPMENT & SUPPLIES**


Cincinnati, OH 45241-4807 USA

# SAFETY PRECAUTIONS

	<b>⚠ CAUTION</b>
	This equipment is designed and sold for commercial use only. This equipment is not to be used by the consumer in home use. Do not allow direct contact of this equipment by the public when used in food service locations. Only personnel trained and experienced in the equipment operation may operate this equipment. Carefully read all installation instructions before operating the equipment.

	<b>⚠ WARNING</b>
	Always wear safety glasses when servicing this equipment.

	<b>⚠ WARNING</b>
	Any alterations to this equipment will void the warranty and may cause a dangerous situation. NEVER make alterations to the equipment.

	<b>⚠ DANGER</b>
	Machine must be properly grounded to prevent electrical shock to personnel. Do NOT immerse the equipment in water. Always unplug the equipment before cleaning or servicing.

## NOTE

The information, specifications and illustrations contained in this manual represent the latest data available at time of publication. Right is reserved to make changes as required at the discretion of Gold Medal Products Company without notice.


## INSTALLATION

### CHECKING SHIPMENT

Your new Bag-In-A-Box Oil Pump System is completely assembled and ready to operate. Remove the corrugated carton from the machine. Check thoroughly for any damage which may have occurred in transit. Damage claims should be filed immediately with the transportation company.

### ELECTRICAL REQUIREMENTS

Model No.	Volts	Amps	Watts	Hertz
2245EX	230	3.3	772	50
2246EX	230	3.3	772	50

	<b>⚠ DANGER</b>
Machine must be properly grounded to prevent shock in case of electrical problems.	

### INSTALLATION INSTRUCTIONS

1. Make sure your stainless steel oil tank is clean and sanitary before placing it onto the tank retainer. Once the oil tank is clean carefully lift the tank and place it onto the tank retainer slide assembly. The sight gauge on the tank should be facing the operator.
2. Pull the oil tank forward until the slides stop. Lift the bag-in-a-box oil pump on the top rim of the tank, centering it so that the angles fit inside the tank. The pump cabinet should now slide freely on the side rails. Keep the pump cabinet to the front of the tank so you can load the box of oil onto the top shelf easier.
3. Carefully lift your box of oil onto the top platform of the pump cabinet with the oil connector to the operator side of the machine.
4. Take the gray oil drain connector with hose and slide it over the bag spout. Push the bag connector probe into the bag spout to release the oil into the valve.
5. Connect the oil line from the cabinet to the male fitting of the pump and connect the oil pump power cord to the right side of the front panel.
6. Once all of the connections have been made push the pump unit to the back of the tank. Place the supplied stainless steel lid on the front of the tank and then push the oil tank and pump back into the base cabinet until it stops.

## **OPERATING INSTRUCTIONS**

### **FINAL PREPARATIONS**

Your new Bag-In-A-Box Accu-Meter Oil Pump was adjusted, inspected and tested before it left the factory, and is ready to operate with some fine adjustment to the volume of oil delivered to your popper, if necessary.

### **HIGH HEAT SETTING**

1. Turn on the "OIL SYSTEM MASTER SWITCH" located on the switch panel in your popper.
2. The high heat cycle is factory set at 30 minutes.
3. To shorten the high heat-up period to your desired cycle time remove the chrome cap listed "HIGH HEAT". With a small screwdriver turn the internal control to your desired setting, replace the cap after adjustment has been made.
4. To start the high heat cycle press the heat push button.

### **OIL PUMP CYCLE SETTINGS**

1. The oil quantity is factory set at approximately 8 ounces. You will need to set the volume of oil to your corn charge. To do this you will need to remove the chrome cap on the front panel listed "PUMP SECONDS". Adjustment can be made by turning the internal control with a small screwdriver. Replace the cap after adjustment has been made.
2. With a measuring cup under the aluminum oil line directly above the popcorn kettle, push the button labeled "OIL PUMP" this initiates the pumping of the oil. Allow the oil to drain completely before checking the amount of oil in cup. Change the pumping time until you reach the oil charge listed below.

<u>CORN CHARGE</u>	<u>OIL CHARGE</u>
12 oz. (355 ml)	3.6 oz. (106 ml)
14 oz. (414 ml)	4.2 oz. (124 ml)
16 oz. (473 ml)	4.8 oz. (142 ml)
20 oz. (592 ml)	6.0 oz. (177 ml)
28 oz. (828 ml)	8.4 oz. (248 ml)
36 oz. (1065 ml)	10.8 oz. (319 ml)
48 oz. (1419 ml)	14.4 oz. (426 ml)

## **CLEANING INSTRUCTIONS**

### **OIL TANK RESERVOIR** (all Stainless Steel construction)

1. Drain oil from tank using on/off pump switch located on the front of the pump cabinet. You must first remove your popcorn kettle so you can drain oil into a separate container. Once container is in place turn switch to "ON" to drain tank.
2. If tank is empty, remove Bag-In-A-Box pump from tank and place it on a towel or rag to absorb the excess oil. Remove oil tank reservoir from the popcorn base. Drain the oil remaining in tank to a separate container.
3. You now can wash the oil tank at a nearby sink or wipe it down with a warm wet towel.

**BAG-IN-A-BOX CABINET** (all Stainless Steel construction)

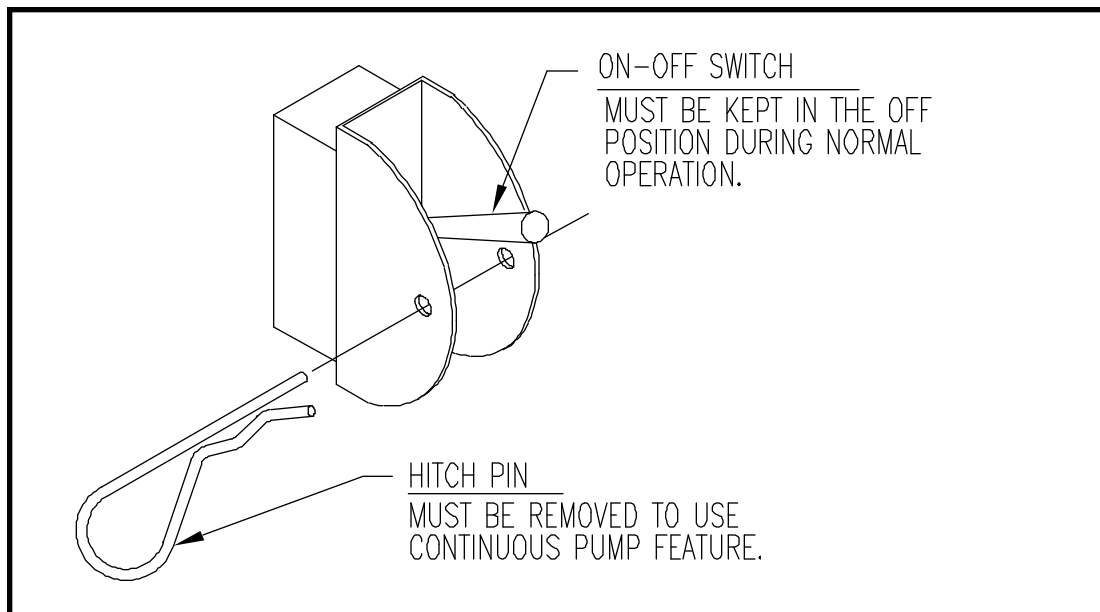
1. Disconnect power supply and oil line from front panel of pump cabinet.
2. Slide pump cabinet out of your popcorn base and remove the oil box from the top shelf. With a warm wet cloth wipe all surfaces until clean.

**OIL RESERVOIR DRAIN SWITCH**


This unit is equipped with a continuous oil pump switch. The on-off switch is used to drain the reservoir when removal of popcorn oil or cleaning is required. The pump motor will run continuously when switched to the "ON" position. The switch is located on the front of the cabinet protected by a stainless steel guard. You must first remove the hitch pin (Part No. 87130) from the switch guard. The hitch pin is used as a safety measure to assure that the switch is left in the "OFF" position to prevent an overflow of oil. Please return the hitch pin to the guard to eliminate any possibility of the switch being turned on.


**DRAINING INSTRUCTIONS**


1. Before you remove the hitch pin, you must first decide what you will use to hold the popcorn oil that remains in the reservoir.
2. Carefully remove your popcorn kettle from your machine. (Make sure the kettle is cool before removing to prevent serious burns). If removal of your kettle is not possible Gold Medal offers an oil tank drain hose assembly (Part No. 79218). The drain hose connects directly to the Bag-In-A-Box pump and makes it possible to drain into a bucket on the floor. Please contact Gold Medal for current pricing on this item.
3. Place the sanitary container under the oil delivery tube inside of the cabinet. The oil will drain from the oil tube once the switch is turned on.
4. Once the container is securely in place remove the hitch pin from the switch guard. Move the switch to the "ON" position to begin the draining of the reservoir.
5. Return the switch to the "OFF" position and insert the hitch pin through the holes on the switch guard. (See illustration below).



## MAINTENANCE INSTRUCTIONS

	<b>⚠ CAUTION</b>
	THE FOLLOWING SECTIONS OF THIS MANUAL ARE INTENDED ONLY FOR QUALIFIED SERVICE PERSONNEL WHO ARE FAMILIAR WITH ELECTRICAL EQUIPMENT. THESE ARE NOT INTENDED FOR THE OPERATOR.

	<b>⚠ WARNING</b>
	Adequate eye protection must be used when servicing this equipment to prevent the possibility of injury.

	<b>⚠ DANGER</b>
	Do NOT immerse the equipment in water. Unplug your machine before servicing.

## ORDERING SPARE PARTS

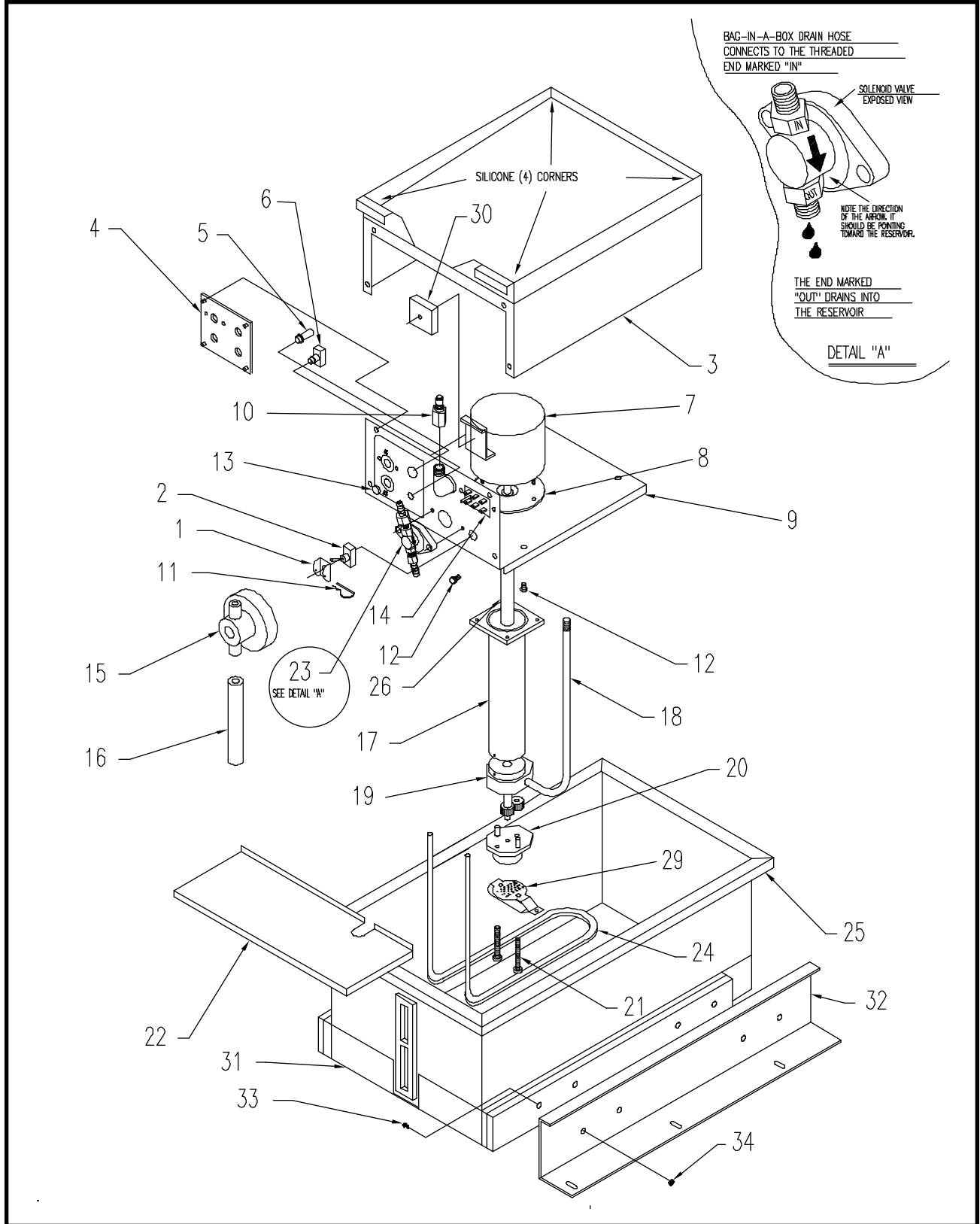
1. Identify the desired part by checking it against the photos, illustrations, and/or the parts list.
2. When ordering, please include part number, part name, and quantity desired.
3. Please include your model name and machine serial number (located on the machine nameplate) with your order.
4. Address all parts orders to:

Parts Department  
Gold Medal Products Co.  
10700 Medallion Drive  
Cincinnati, Ohio 45241-4807

or, place orders at:

(513) 769-7676  
Fax: (513) 769-8500  
E-mail: goldme19@eos.net

PUMP ASSEMBLY – EXPLODED VIEW



**PARTS LIST – PUMP**

<b>Item No.</b>	<b>Model #2245EX Part No.</b>	<b>Model #2246EX Part No.</b>	<b>Description</b>
1	39058	39058	Guard Motor Switch
2	74087	74087	On/Off Switch
3	79192	79192	Pump Cabinet Weld Assembly
4	79078	79078	Dual Timer, Oil Pump
5	41032	41032	Pilot Light
6	41031	41031	Switch, Oil Pump
7	79077	79077	Pump Motor
8	79005	79005	Gasket, Pump Motor
9	79209	79209	Motor/Switch Plate Assembly
10	79008	79008	Quick Connect Coupling
11	41649	41649	Hitch Pin
12	42044	42044	#8-32 x 3/8" (9,5mm) Hx Hd Screw
13	45395	45395	Hole Plug, St. Stl.
14	79004	79004	Cinch Plug
15	79100	79100	Bag Connector
16	79182	79182	Drain Tube
17	79205	79205	Pump Mounting Tube
18	79206	79206	Oil Delivery Tube
19	79042	79042	Pump Body
20	79041	79041	End Cap
21	79046	79046	1/4-20 x 1" (25,4mm) Hx Hd Bolt
22	79197	79256	Oil Tank Lid
23	79228EX	79228EX	Solenoid Valve
24	79194	79194	Heat Element, 500W/30W
25	79170	79255	Oil Tank Assembly
26	79204	79204	Drive Shaft
27	79022	79022	Chrome Pipe Reducer
28	79184	79184	3/8" (9,5mm) FPT w/ Barb Stem Fitting
29	79217	79217	Filter Screen
30	79234EX	79234EX	Electronic Timer
31	79214	79236	Tank Retainer, with Slide
32	79248	79248	Slide Mount Bracket, Right
	79249	79249	Slide Mount Bracket, Left
33	79242	79242	1/4-20 x 1/2" (12,7mm) Button Hd Screw
34	46311	46311	1/4-20 Whiz Lock Nut

**ITEMS NOT SHOWN**

79219	79219	50 Watt Foil Heater
79179	79179	Plastic Oil Tube
47702	47702	#8-32 Acorn Nut
75220	75220	Hose Clamp With Screw
79238	79238	Solenoid Spare Parts Kit
79258	79258	0.1MFD 250V~ Capacitor

**ADDITIONAL ACCESSORY NOT INCLUDED**

79218	79218	Oil Tank Drain Hose Assembly
-------	-------	------------------------------

# WARRANTY

WE WARRANT to the original purchaser the Gold Medal equipment sold by us to be free from defects in material or workmanship under normal use and service. Our obligation under this warranty shall be limited to the repair or replacement of any defective part for a period of six (6) months from the date of sale to the Original Purchaser with regard to labor and two (2) years with regard to parts and does not cover damage to the equipment caused by accident, alteration, improper use, voltage, abuse, or failure to follow instructions.

THIS WARRANTY IS IN LIEU OF ALL OTHER WARRANTIES EXPRESSED OR IMPLIED, AND OF ALL OTHER OBLIGATIONS OR LIABILITIES ON OUR PART, INCLUDING THE IMPLIED WARRANTY OF MERCHANTABILITY. THERE ARE NO WARRANTIES WHICH EXTEND BEYOND THE DESCRIPTION ON THE FACE HEREOF. We neither assume, nor authorize any other person to assume for us, any other obligation or liability in connection with the sale of said GOLD MEDAL equipment or any part thereof.

The term "Original Purchaser" as used in this warranty shall be deemed to mean that person, firm, association, or corporation who was billed by the GOLD MEDAL PRODUCTS COMPANY, or their authorized distributor for the equipment.

THIS WARRANTY HAS NO EFFECT AND IS VOID UNLESS THE ORIGINAL PURCHASER FIRST CALLS GOLD MEDAL PRODUCTS COMPANY AT 1-800-428-2676 TO DISCUSS WITH OUR SERVICE REPRESENTATIVE THE EQUIPMENT PROBLEM, AND, IF NECESSARY, FOR INSTRUCTIONS CONCERNING THE REPAIR OR REPLACEMENT OF PARTS.

*NOTE: This equipment is manufactured and sold for commercial use only.*



**GOLD MEDAL PRODUCTS COMPANY**  
**10700 Medallion Drive**  
**Cincinnati, Ohio 45241-4807 USA**