

# *Cheese Display Case*

Part No. 38475EX  
Revised June 1996

## Instruction Manual

Model #5582EX and Model #5583EX





 **GOLD MEDAL**®


**FUNFOOD EQUIPMENT & SUPPLIES**


Cincinnati, OH 45241-4807 USA


# SAFETY PRECAUTIONS

	<b>⚠ CAUTION</b>
	This equipment is designed and sold for commercial use only. This equipment is not to be used by the consumer in home use. Do not allow direct contact of this equipment by the public when used in food service locations. Only personnel trained and experienced in the equipment operation may operate this equipment. Carefully read all installation instructions before operating the equipment.

	<b>⚠ WARNING</b>
	Always wear safety glasses when servicing this equipment.

	<b>⚠ WARNING</b>
	NEVER put your fingers or any object into the heating area. We do NOT assume any liability for injury due to careless handling or operation of this equipment.

	<b>⚠ WARNING</b>
	Any alterations to this equipment will void the warranty and may cause a dangerous situation. NEVER make alterations to the equipment.

	<b>⚠ DANGER</b>
	Machine must be properly grounded to prevent electrical shock to personnel. Do NOT immerse the equipment in water. Always unplug the equipment before cleaning or servicing.

## NOTE

The information, specifications and illustrations contained in this manual represent the latest data available at time of publication. Right is reserved to make changes as required at the discretion of Gold Medal Products Company without notice.

## FORWARD

This instruction manual and parts listing covers the following CHEESE DISPLAY CASE models: 5582EX and 5583EX.

Clean your CHEESE DISPLAY CASE thoroughly upon arrival to remove any debris left from manufacture (see "CARE AND CLEANING" instructions).

## CHECKING SHIPMENT


Your new CHEESE DISPLAY CASE is shipped completely assembled, ready to operate. After removing the corrugated carton from the machine, check thoroughly for any damage which may have occurred in transit. Claims should be filed immediately with the transportation company.

## ELECTRICAL REQUIREMENTS

MODEL No.	VOLTS	HERTZ	WATTS	AMPS
<b>5582EX</b>				
DURING WARM UP	230	50	528	2.40
AFTER WARM UP	230	50	128	0.53
<b>5583EX</b>				
DURING WARM UP	230	50	603	2.74
AFTER WARM UP	230	50	203	0.92

## CONTROLS

A switch on the bottom pan controls the strip heaters, blower fan and light bulbs. The fan circulates air over the strip heaters on the underside of the bottom pan which keeps the cheese portion packs warm and fresh in the cabinet.

	<b>⚠ CAUTION</b>
When replacing the 7½ WATT clear light bulb in the lighted sign front, do not use a bulb larger than 7½ WATT.	

## LOADING CHEESE PORTION PACKS

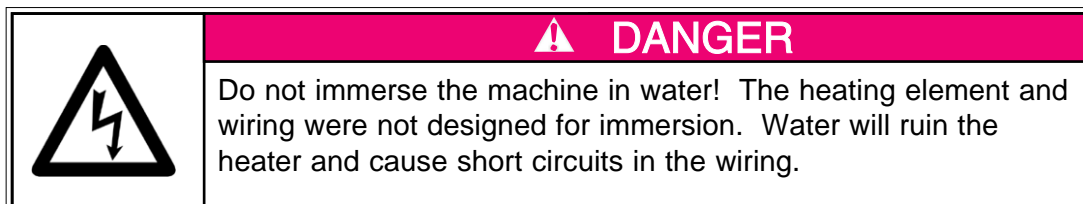
To load cheese portion packs into your CHEESE DISPLAY CASE, open the hinged acrylic door and remove wire rack from the cabinet. Cheese packs can be loaded from the front or rear of rack by carefully sliding packs along side rails. Once all portion packs have been loaded to wire rack gently slide rack into cheese display case.

## LOCATION


Always pick a good location for your cheese display case, so that the public can see the attractive display. A front counter location is usually best.


## CARE AND CLEANING


The stainless steel cabinet of the CHEESE DISPLAY CASE is easy to keep clean. Usually a warm damp cloth will remove all dirt and grease spots. The plexiglass should also be kept clean. **DO NOT USE AMMONIA CLEANSERS.** Clean the inside and outside of the plexiglass with a soft cloth and a non-abrasive cleanser.



## MAINTENANCE INSTRUCTIONS

	<b>⚠ CAUTION</b>
	THE FOLLOWING SECTIONS OF THIS MANUAL ARE INTENDED ONLY FOR QUALIFIED SERVICE PERSONNEL WHO ARE FAMILIAR WITH ELECTRICAL EQUIPMENT. THESE ARE NOT INTENDED FOR THE OPERATOR.

	<b>⚠ WARNING</b>
	Adequate eye protection must be used when servicing this equipment to prevent the possibility of injury.

	<b>⚠ DANGER</b>
	Do NOT immerse the equipment in water. Unplug your machine before servicing.

## ORDERING SPARE PARTS

1. Identify the desired part by checking it against the photos, illustrations, and/or the parts list.
2. When ordering, please include part number, part name, and quantity desired.
3. Please include your model name and machine serial number (located on the machine nameplate) with your order.
4. Address all parts orders to:

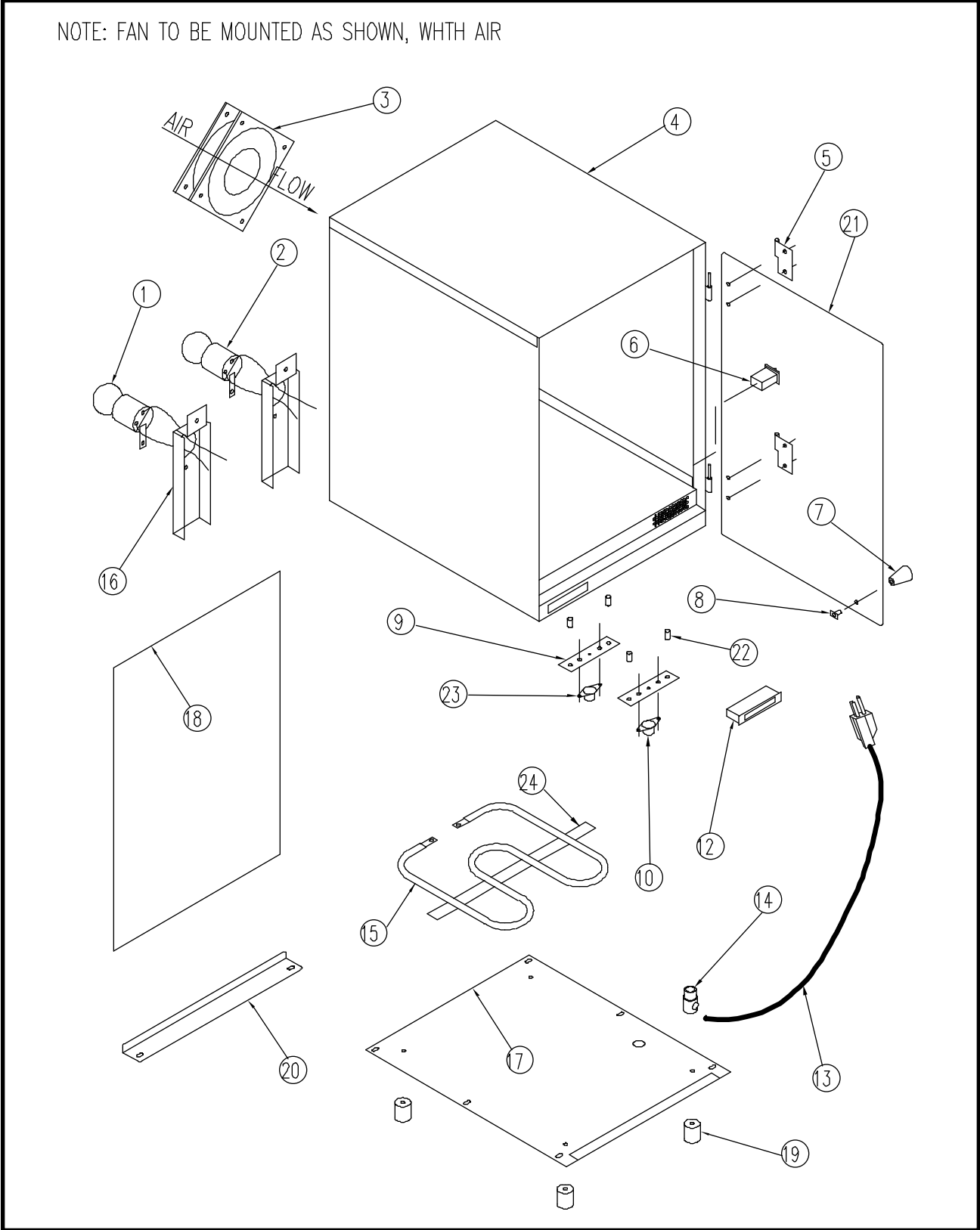
Parts Department  
Gold Medal Products Co.  
10700 Medallion Drive  
Cincinnati, Ohio 45241-4807

or, place orders at:

(513) 769-7676  
Fax: (513) 769-8500  
E-mail: goldme19@eos.net

# CABINET ASSEMBLY

NOTE: FAN TO BE MOUNTED AS SHOWN, WITH AIR FLOW



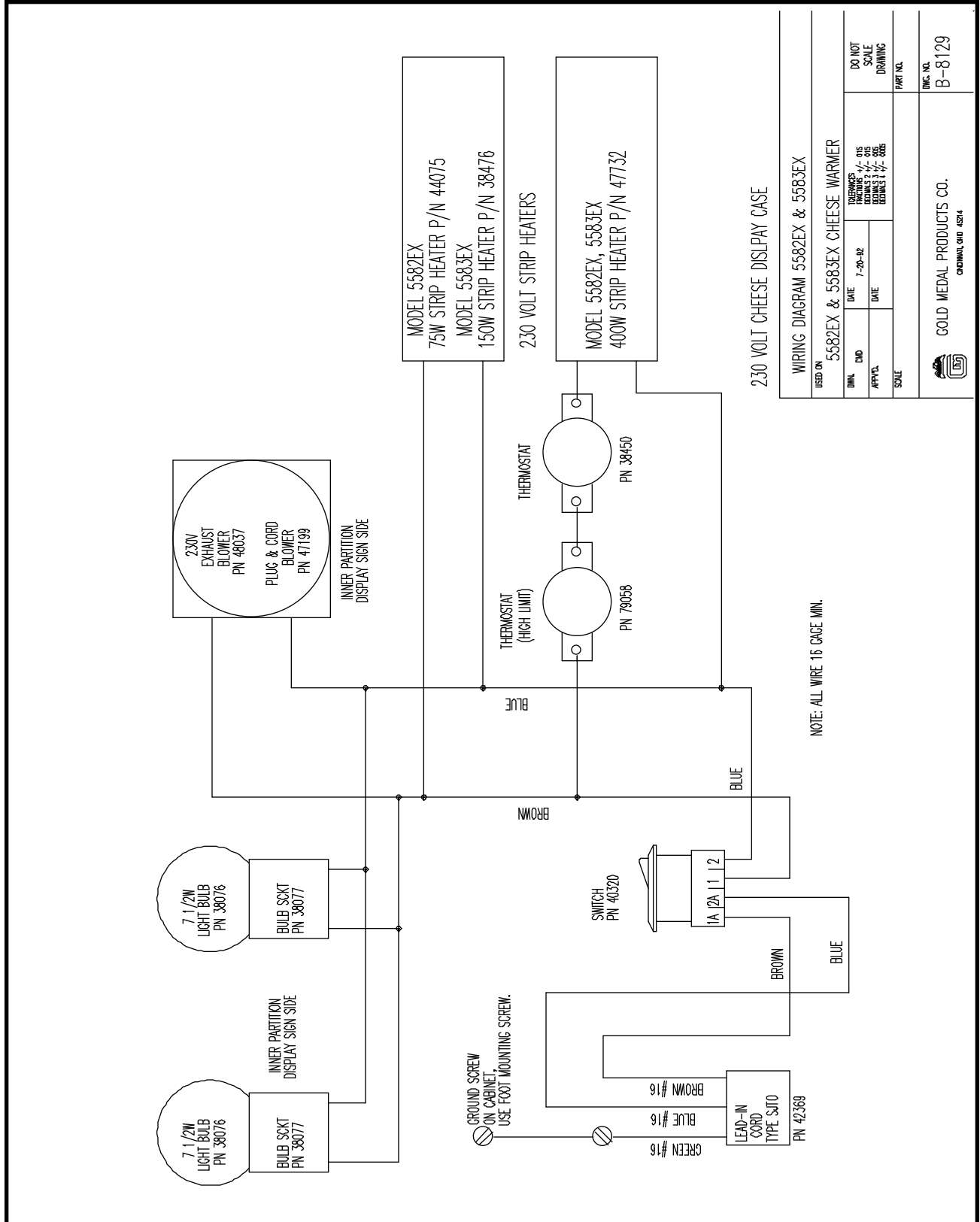
## PARTS LIST - CABINET ASSEMBLY

Item No.	#5582EX Part No.	#5583EX Part No.	Description
1	47422	47422	Light Bulb, Clear 7½ Watt (2)
2	75040	75040	Bulb Socket Cup (2)
3	48018	48018	Exhaust Blower
	47199	47199	Plug & Cord Blower
4	38436	38463	Cabinet Weldment
5	38448L	38448L	Hinge, Left Side (2)
6	40324	40324	Switch, SPST Rocker Type
7	47120	47120	Knob, Door
8	75267	75267	Tee Bolt
9	38451	38451	Heat Sink Plate (2)
10	38533	38533	Thermostat
11	n/a	n/a	n/a
12	47561	47561	Magnetic Catch
13	22038	22038	Lead-in Cord 15 Amp
14	87163	87163	Strain Relief
15	38534	38534	Heat Element, 400W
16	38473	38474	Cover Light Wires (2)
17	38439	38466	Bottom Plate, Cabinet
18	38447	38470	Sign, Display Area (2)
	n/a	n/a	Nacho Cheese Sign
19	47155	47155	Rubber Feet (4)
20	38440	38467	Retainer, Display Sign
21	38428	38455	Door, 1/8 Acrylic
22	47264	47264	Spacer, Thermostat Mt. (4)
23	79058	79058	Thermostat (High Limit)
24	38536	38536	Clamp, Element (1)

### SHOWN ON EXPLODED VIEW

38429	38456	Rack Assembly
47236	47236	Bushing Snap

# ELECTRICAL DIAGRAM



# WARRANTY

WE WARRANT to the original purchaser the Gold Medal equipment sold by us to be free from defects in material or workmanship under normal use and service. Our obligation under this warranty shall be limited to the repair or replacement of any defective part for a period of six (6) months from the date of sale to the Original Purchaser with regard to labor and two (2) years with regard to parts and does not cover damage to the equipment caused by accident, alteration, improper use, voltage, abuse, or failure to follow instructions.

THIS WARRANTY IS IN LIEU OF ALL OTHER WARRANTIES EXPRESSED OR IMPLIED, AND OF ALL OTHER OBLIGATIONS OR LIABILITIES ON OUR PART, INCLUDING THE IMPLIED WARRANTY OF MERCHANTABILITY. THERE ARE NO WARRANTIES WHICH EXTEND BEYOND THE DESCRIPTION ON THE FACE HEREOF. We neither assume, nor authorize any other person to assume for us, any other obligation or liability in connection with the sale of said GOLD MEDAL equipment or any part thereof.

The term "Original Purchaser" as used in this warranty shall be deemed to mean that person, firm, association, or corporation who was billed by the GOLD MEDAL PRODUCTS COMPANY, or their authorized distributor for the equipment.

THIS WARRANTY HAS NO EFFECT AND IS VOID UNLESS THE ORIGINAL PURCHASER FIRST CALLS GOLD MEDAL PRODUCTS COMPANY AT 1-800-428-2676 TO DISCUSS WITH OUR SERVICE REPRESENTATIVE THE EQUIPMENT PROBLEM, AND, IF NECESSARY, FOR INSTRUCTIONS CONCERNING THE REPAIR OR REPLACEMENT OF PARTS.

*NOTE: This equipment is manufactured and sold for commercial use only.*



**GOLD MEDAL PRODUCTS COMPANY**  
**10700 Medallion Drive**  
**Cincinnati, OH 45241-4807 USA**