

# *Lil' & Hot Diggity Bun Warmer*

Part No. 87794EX  
Revised January 2000

## Instruction Manual

Models #8018EX, #8117EX and #8019EX




 **GOLD MEDAL<sup>®</sup>**


**FUNFOOD EQUIPMENT & SUPPLIES**


Cincinnati, OH 45241-4807 USA


e-mail: [goldme19@eos.net](mailto:goldme19@eos.net) • [www.gmpopcorn.com](http://www.gmpopcorn.com)


# SAFETY PRECAUTIONS

	<b>⚠ CAUTION</b>
	This equipment is designed and sold for commercial use only. This equipment is not to be used by the consumer in home use. Do not allow direct contact of this equipment by the public when used in food service locations. Only personnel trained and experienced in the equipment operation may operate this equipment. Carefully read all installation instructions before operating the equipment.

	<b>⚠ WARNING</b>
	Always wear safety glasses when servicing this equipment.

	<b>⚠ WARNING</b>
	NEVER put your fingers or any object into the heating area. We do NOT assume any liability for injury due to careless handling or operation of this equipment.

	<b>⚠ WARNING</b>
	Any alterations to this equipment will void the warranty and may cause a dangerous situation. NEVER make alterations to the equipment.

	<b>⚠ DANGER</b>
	Machine must be properly grounded to prevent electrical shock to personnel. Do NOT immerse the equipment in water. Always unplug the equipment before cleaning or servicing.

## NOTE

The information, specifications and illustrations contained in this manual represent the latest data available at time of publication. Right is reserved to make changes as required at the discretion of Gold Medal Products Company without notice.

## USAGE INSTRUCTIONS

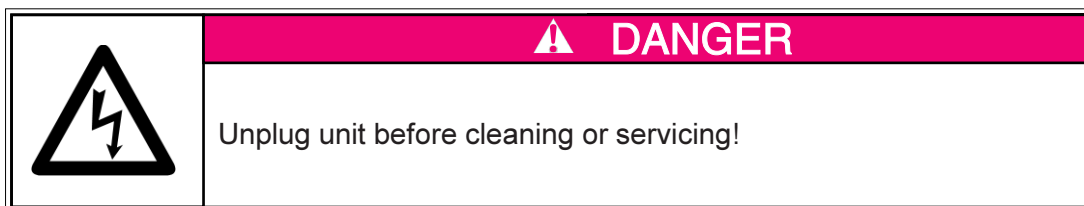
1. Remove from carton
2. Place on a level surface
3. Plug unit into an appropriate power source outlet.
4. Open the Warmer compartment drawer and remove "false bottom" pieces.
5. Replace the false bottoms and close the compartment.
6. Turn the warmer on to 100° - 120° F and allow to preheat for 5 - 10 minutes.
7. Place buns directly on false bottoms and warm.

**NOTE:** The water should last about 6 - 8 hours but varies greatly depending on usage temperature setting, etc. Check for water during the day and clean each night to prevent product contamination.

The Lil' Diggity and Diggity Bun Warmers are able to accommodate 42 buns comfortably, while the Hot Diggity Bun Warmer can handle a whopping 84 buns.

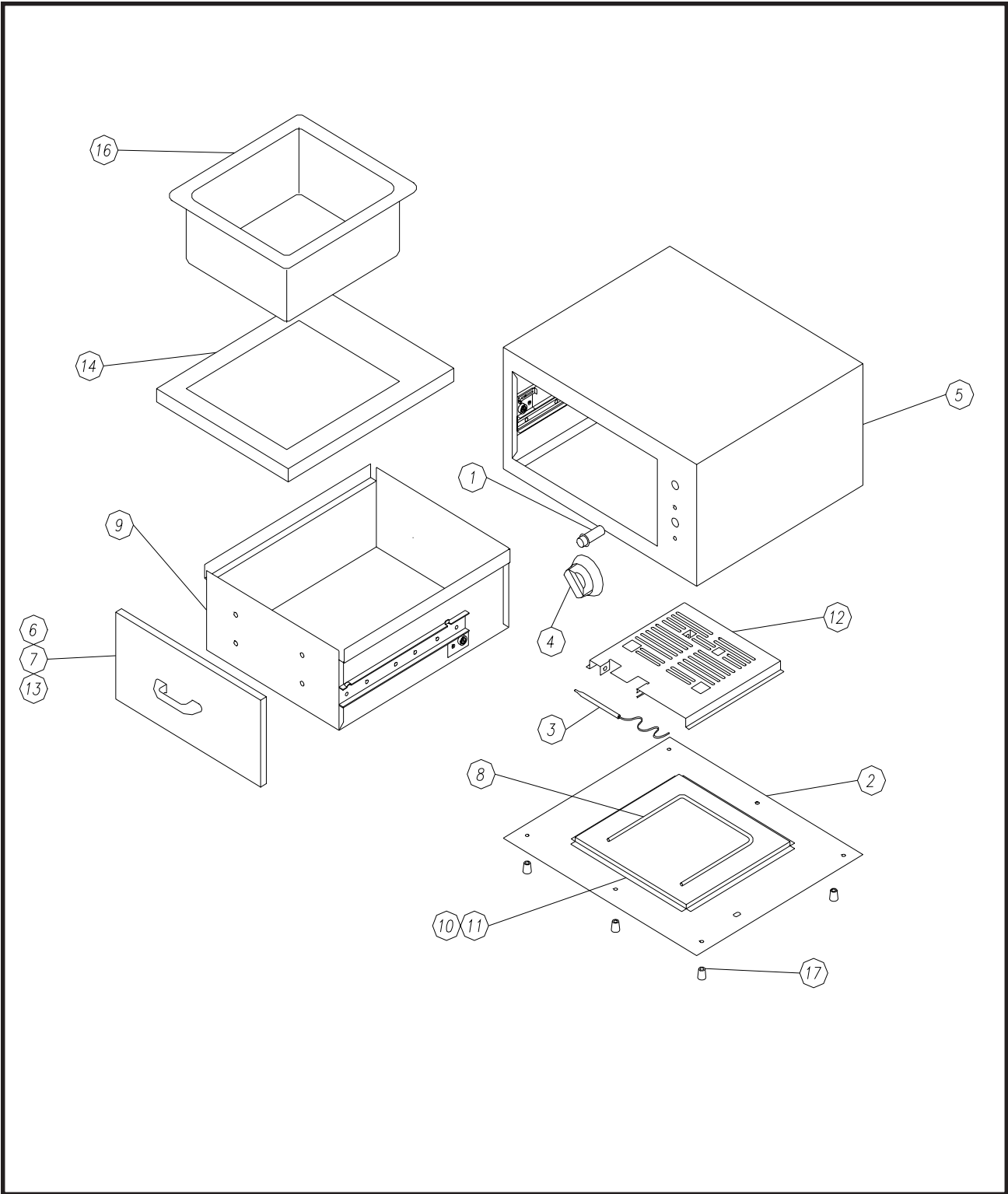
Both the Lil' and Hot Diggity Bun Warmers operate on a 230 volt A.C., 50 cycle source. The Lil' Diggity Bun Warmer has a power draw of 300 watts, while the Hot Diggity Bun Warmer has a power draw of 600 watts.

## CLEANING INSTRUCTIONS



1. Unplug unit.
2. Open drawer. When drawer is fully opened, access drawer release levers. You are now able to completely remove drawer.
3. Remove pan from drawer frame and clean as needed.
4. Reassemble unit.

# BUN WARMER ASSEMBLY

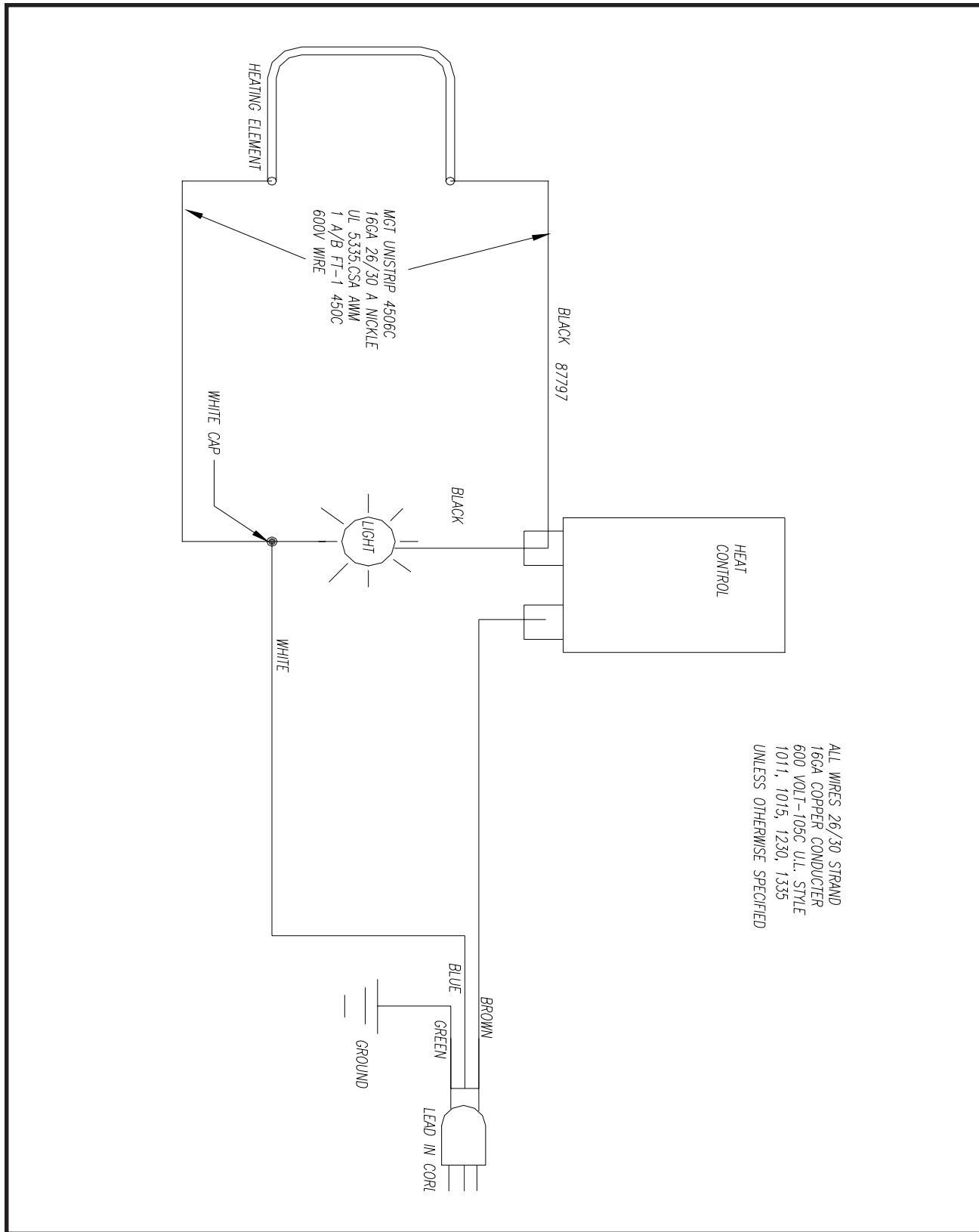


## BUN WARMER PARTS LIST

<b>ITEM #</b>	<b>MODEL 8018EX</b>	<b>MODEL 8019EX</b>	<b>MODEL 8117EX</b>	<b>Description</b>
1	41032	41032	41032	Pilot light, 230V, Red
2	87779	87523	87767	Bottom Cover
3	87429	87429	87429	Heat control, cap
4	87430	87430	87430	Knob, Heat control
5	87788	87706	87776	Body Weldment
6	87781	87703	87769	Drawer front weldment
7	87420	87420	87420	Drawer handle
8	87449	87449	87449	Heat element, 230V, 300W
9	87923	87925	87929	Drawer weldment
10	87789	87742	87777	Insulation mat
11	87784	87741	87772	Insulation Pan
12	87763	87763	87763	Element thermo pan
13	87783	87526	87771	Drawer Rear
14	87778	87527	87766	Cover panel
15	87527	87522	87522	End cover
16	87921	87921	87927	Drawer pan
17	47328	47328	47328	Glides

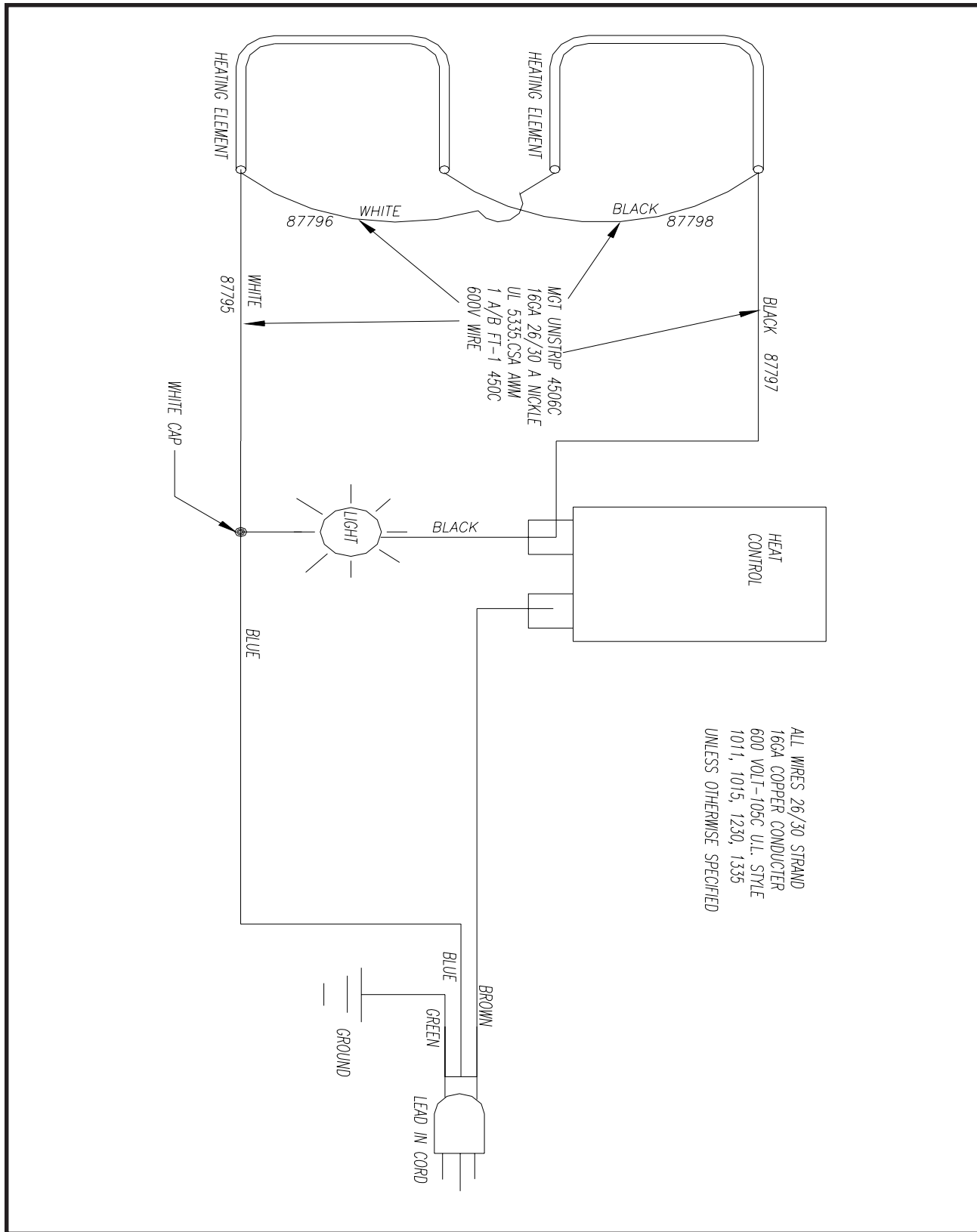
# ELECTRICAL SCHEMATIC

Model #8018EX and #8117EX



# ELECTRICAL SCHEMATIC

Model #8019EX



## **ORDERING SPARE PARTS**

1. Identify the needed part by checking it against the photos, illustrations, and/or the parts list.
2. When ordering, please include part number, part name, and quantity needed.
3. Please include your model name and machine serial number (located on the machine nameplate) with your order.
4. Address all parts orders to:

Parts Department  
Gold Medal Products Co.  
10700 Medallion Drive  
Cincinnati, Ohio 45241-4807

or, place orders at:

(513) 769-7676  
Fax: (513) 769-8500  
E-mail: [goldme19@eos.net](mailto:goldme19@eos.net)  
or Web Page  
[www.gmpopcorn.com](http://www.gmpopcorn.com)

***See our complete catalog for  
more Gold Medal Funfood  
Equipment and Supplies***

# WARRANTY

WE WARRANT to the original purchaser the Gold Medal equipment sold by us to be free from defects in material or workmanship under normal use and service. Our obligation under this warranty shall be limited to the repair or replacement of any defective part for a period of six (6) months from the date of sale to the Original Purchaser with regard to labor and two (2) years with regard to parts and does not cover damage to the equipment caused by accident, alteration, improper use, voltage, abuse, or failure to follow instructions.

THIS WARRANTY IS IN LIEU OF ALL OTHER WARRANTIES EXPRESSED OR IMPLIED, AND OF ALL OTHER OBLIGATIONS OR LIABILITIES ON OUR PART, INCLUDING THE IMPLIED WARRANTY OF MERCHANTABILITY. THERE ARE NO WARRANTIES WHICH EXTEND BEYOND THE DESCRIPTION ON THE FACE HEREOF. We neither assume, nor authorize any other person to assume for us, any other obligation or liability in connection with the sale of said GOLD MEDAL equipment or any part thereof.

The term "Original Purchaser" as used in this warranty shall be deemed to mean that person, firm, association, or corporation who was billed by the GOLD MEDAL PRODUCTS COMPANY, or their authorized distributor, for the equipment.

THIS WARRANTY HAS NO EFFECT AND IS VOID UNLESS THE ORIGINAL PURCHASER FIRST CALLS GOLD MEDAL PRODUCTS COMPANY AT 1-800-428-2676 TO DISCUSS WITH OUR SERVICE REPRESENTATIVE THE EQUIPMENT PROBLEM, AND, IF NECESSARY, FOR INSTRUCTIONS CONCERNING THE REPAIR OR REPLACEMENT OF PARTS.

*NOTE: This equipment is manufactured and sold for commercial use only.*



**GOLD MEDAL PRODUCTS COMPANY**  
**10700 Medallion Drive**  
**Cincinnati, OH 45241-4807 USA**