

P-60 and 60 Special

Popcorn Machine Instruction Manual

Model #1866EX, #2085EX, #2086EX
#2656EX and #2656JX



Safety Precautions



⚠ CAUTION

This equipment is designed and sold for commercial use only. This equipment is not to be used by the consumer in home use. Do not allow direct contact of this equipment by the public when used in food service locations. Only personnel trained and experienced in the equipment operation may operate this equipment. Carefully read all installation instructions before operating the equipment.



⚠ WARNING

Always wear safety glasses when servicing this equipment.



⚠ WARNING

To avoid serious burns, do NOT touch the kettle while it is hot.



⚠ WARNING

Any alterations to this equipment will void the warranty and may cause a dangerous situation. NEVER make alterations to the equipment. Make sure all machine switches are in the OFF position before plugging the equipment into a receptacle.



⚠ DANGER

Machine must be properly grounded to prevent electrical shock to personnel. Do NOT immerse the kettle, warmer, or any other part of this equipment in water. Always unplug the equipment before cleaning or servicing.

NOTE

The information, specifications and illustrations contained in this manual represent the latest data available at time of publication. Right is reserved to make changes as required at the discretion of Gold Medal Products Company without notice.

INSTALLATION

INSTALLATION

Your new 60 Special or P-60 Popcorn Machine is completely assembled. Remove all Packing material and tape before starting operation.

OPERATING INSTRUCTIONS

CONTROLS AND THEIR FUNCTIONS

There are three switches on the popper.

LIGHT AND WARMER SWITCH

Turns on the heat to the bottom corn pan and heat light.

KETTLE MOTOR SWITCH

Turns on the motor which drives kettle agitator shaft.

KETTLE HEAT SWITCH

Turns on the heat element

AMOUNT OF POPCORN AND OIL

Your new popper is equipped with a six ounce (177 ml) corn measure cup. We recommend flavored and colored coconut oil. Popcorn popped in coconut oil stays fresh longer. Coconut oil does not leave black deposits in your kettle like other oils.

Corn charge - 6 oz. (177 ml)

Oil charge - 1.6 to 2.0 oz. (60 ml)


Flavacol - 1 tablespoon (8 cc)

POPPING INSTRUCTIONS



1. Turn KETTLE HEAT and KETTLE MOTOR switch ON.
2. Make test pop with 3 kernels of corn and 1 oz. (30 ml) of oil.
3. Load pre-measured popcorn and oil pouch into kettle.
4. When corn has popped, dump kettle.
5. Repeat cycle starting with Item #3; always pop 3-5 batches for best popcorn.

CARE AND CLEANING


| | |
|---|---|
|  | <p style="text-align: center;">⚠ DANGER</p> <p>Unplug your machine before cleaning glass panel and case. Never immerse the kettle in water. This will ruin the electrical components and automatically void the guarantee.</p> |
|---|---|

Each time you finish a series of poppings, wipe the outside of the kettle with a soft cloth to remove any oil drippage on the outside of the kettle. After you finish popping for the day, allow kettle to cool until it is not too hot to handle, but still warm. Unplug kettle and remove it from the machine. With a cloth, wipe out the inside of the kettle, kettle lid, crossbar, outside and underneath of the kettle.


Cleaning the cabinet of your machine is easy. Take a clean cloth and wipe excess grease from the glass. Wipe the outside of the machine also.

NOTE: Never use a glass or plastic cleaner that contains ammonia. It will crack the plastic on the machine.

MAINTENANCE INSTRUCTIONS

| | |
|---|---|
|  | ⚠ CAUTION |
| | <p>THE FOLLOWING SECTIONS OF THIS MANUAL ARE INTENDED ONLY FOR QUALIFIED SERVICE PERSONNEL WHO ARE FAMILIAR WITH ELECTRICAL EQUIPMENT. THESE ARE NOT INTENDED FOR THE OPERATOR.</p> |

| | |
|---|---|
|  | ⚠ WARNING |
| | <p>Adequate eye protection must be used when servicing this equipment to prevent the possibility of injury.</p> |

| | |
|--|---|
|  | ⚠ DANGER |
| | <p>Do NOT immerse the kettle, warmer, or any other part of this equipment in water. Unplug your machine before servicing.</p> |

ACCESSORIES

| <u>Description</u> | <u>Part Number</u> |
|--------------------|--------------------|
| Shipping Carton | 49026 |
| Corn Measure Cup | 49049 |
| A-Scoop | 2071 |
| Flavacol Cup | 47678 |

ORDERING SPARE PARTS

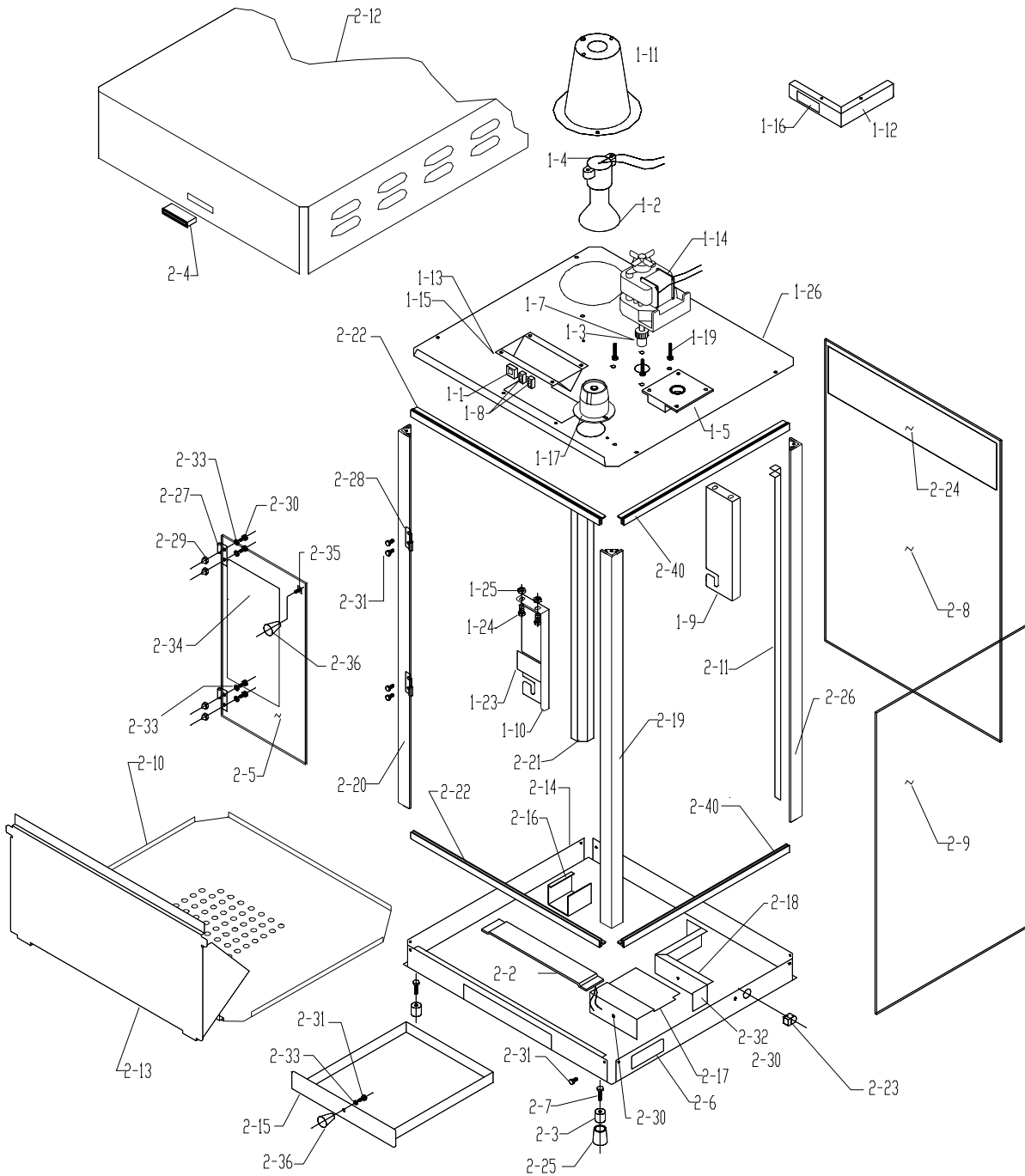
1. Identify the desired part by checking it against the photos, illustrations, and/or the parts list.
2. When ordering, please include part number, part name, and quantity desired.
3. Please include your model name and machine serial number (located on the machine nameplate) with your order.
4. Address all parts orders to:

Parts Department
Gold Medal Products Co.
10700 Medallion Drive
Cincinnati, Ohio 45241-4807

or, place orders at:

(513) 769-7676
Fax: (513) 769-8500
E-mail: goldme19@eos.net

60 SPECIAL & P-60 POPPER ASSEMBLY



PARTS LIST HANGER ASSEMBLY

This list is for all models.

| Item No. | 230 Volt Part No. | 100 Volt Part No. | Description |
|----------|----------------------|----------------------|-------------------------------------|
| 1-0 | 49336EX | 49336JX | Complete Hanger Assembly |
| 1-1 | 42798 | 42798 | Switch |
| 1-2 | 49033 | 41671 | Reflector Flood Light |
| 1-3 | 41742 | 41742 | Set Screw #10-32 x 3 /16" |
| | 46544 | 46544 | ¼" Faston #18-16 AWG. |
| | 47004 | 47004 | Pop Rivet, Closed End |
| 1-4 | 47047 | 47047 | Lamp Holder |
| 1-5 | 67194NM | 67194NM | Gear Box w/ Bushing |
| 1-7 | 47060 | 47060 | Spur Gear |
| 1-8 | 42532 | 42532 | Switch - Light and Warmer |
| 1-9 | 49010 | 49010 | Front Hanger Arm |
| 1-10 | 49009 | 49009 | Rear Hanger Arm |
| 1-11 | 49480 | 49480 | Light Shield - Conical |
| 1-12 | 47799 | 47799 | Light Shield Angle |
| 1-13 | 48501 | 48501 | Switch Box |
| 1-14 | 47037 | 47121 | Kettle Drive Motor |
| 1-15 | 48502 | 48502 | Label, Switches |
| | 49133 | 49133 | Dead-end Splice |
| 1-16 | 41452 | 41452 | Warning, Max Lamp 75W |
| 1-17 | 49330 | 49330 | Receptacle |
| 1-18 | 74146 | 74146 | Hex Nut #8-32 Eslok * |
| 1-19 | 49322 | 49322 | Screw #10-24 x 1" Hex Machine Screw |
| 1-20 | 49302 | 49315 | Washer #10 Internal Tooth * |
| 1-21 | 74149 | 74149 | Hex Nut #8-32 * |
| 1-22 | 74141 | 74141 | Screw #8-32 x 3 /8" RD HD PH * |
| 1-23 | 87087 | 87087 | Label, Caution Hot |
| 1-24 | 14821 | 14821 | Bolt ¼-20 x ½" Hex HD |
| 1-25 | 74133 | 74133 | ¼-20 Hex Nut |
| 1-26 | 49507 | 49507 | Motor Plate |

***Not Shown**

PARTS LIST CABINET ASSEMBLY

| Item No. | Model | Model | Description |
|----------|---------------------|---------------------|-------------------------------------|
| | #2085EX Part No. | #2086EX Part No. | |
| 2-0 | 49589 | 49601 | Complete Cabinet Assembly |
| 2-1 | 42369 | 42369 | Lead-In Cord * |
| 2-2 | 49442 | 49442 | Heat Element 50 Watt |
| 2-3 | 47328 | 47328 | Glide |
| 2-4 | 47561 | 47561 | Magnetic Catch |
| 2-5 | 49395 | 49395 | Door |
| 2-6 | 76097 | 76097 | Label, Unplug to Clean * |
| 2-7 | 41314 | 41314 | #10-24 x 3/4" Hex Head Screw |
| 2-8 | 49519 | 49519 | Front Glass, Tempered |
| 2-9 | 49518 | 49518 | Side Glass, Tempered |
| 2-10 | 49506 | 49506 | Bottom Corn Pan |
| 2-11 | 49091 | 49091 | Wire Duct |
| 2-12 | 49452 | 49450 | Top Pan |
| 2-13 | 49145 | 49145 | Drop Panel |
| 2-14 | 49166 | 49097 | Bottom Pan |
| 2-15 | 49100 | 49100 | Old Maid Pan |
| 2-16 | 49425 | 49425 | Strip Heater Bracket |
| 2-17 | 49104 | 49104 | Cover, Corner Cover |
| 2-18 | 49105 | 49105 | Corner Cover |
| 2-19 | 49514 | 49605 | Right Rear Corner Post |
| 2-20 | 49513 | 49603 | Left Rear Corner Post |
| 2-21 | 49516 | 49607 | Left Front Corner Post |
| 2-22 | 74164 | 49608 | Glass Extrusion 16 9/32" LG (2 Req) |
| 2-23 | 76026 | 76026 | Strain Relief #SR-6P3-4 |
| 2-24 | 49158 | 77506 | Decal, Front Glass |
| 2-25 | 49123 | 49123 | Crutch Tip |
| 2-26 | 49515 | 49606 | Right Front Corner Post |
| 2-27 | 41359 | 41359 | Left Female Hinge NM |
| 2-28 | 41360 | 41360 | Left Male Hinge NM |
| | 41373 | 41373 | Right Female Hinge NM * |
| | 41374 | 41374 | Right Male Hinge NM * |
| 2-29 | 47702 | 47702 | #8-32 Acorn Nut |
| 2-30 | 74141 | 74141 | #8-32 x 1/2" Panhead Phillips |
| 2-31 | 49379 | 49379 | #8-32 x 1/2" Hex Head |
| | 77095 | 77095 | Neoprene Washer * |
| 2-32 | 74149 | 74149 | #8-32 Hex Nut * |
| 2-33 | 74150 | 74150 | #8 Internal Tooth Washer |
| 2-34 | 41019 | 41019 | Universal Popper Decal |
| 2-35 | 75267 | 75267 | Tee Bolt |

* Not Shown

PARTS LIST CABINET ASSEMBLY

| Item No. | Model | Model | Description |
|----------|---------------------|---------------------|---|
| | #2085EX Part No. | #2086EX Part No. | |
| 2-36 | 47120 | 47120 | Knob |
| 2-37 | 49059 | 49509 | Rigid Glass Channel 21 5/8" LG. (6 Req) * |
| 2-38 | 49510 | 49510 | Rigid Glass Channel 15" LG (4 Req) * |
| 2-39 | 49511 | 49511 | Rigid Glass Channel 17" LG (2 Req) * |
| 2-40 | 49508 | 49602 | Glass Extrusion 14 9/32" LG (4 Req) |

* Not Shown

PARTS LIST CABINET ASSEMBLY

| Item No. | Model #1866EX Part No. | Model #2656EX Part No. | Model #2656JX Part No. | Description |
|----------|------------------------------|------------------------------|------------------------------|-------------------------------------|
| 2-0 | 49601 | 49589 | 49589 | Complete Cabinet Assembly |
| 2-1 | 42369 | 42369 | 22038 | Lead-In Cord * |
| 2-2 | 49442 | 49442 | 49440 | Heat Element 50 Watt |
| 2-3 | 47328 | 47328 | 47328 | Glide |
| 2-4 | 47561 | 47561 | 47561 | Magnetic Catch |
| 2-5 | 49395 | 49395 | 49395 | Door |
| 2-6 | 76097 | 76097 | 76097 | Label, Unplug to Clean * |
| 2-7 | 41314 | 41314 | 41314 | #10-24 x 3/4" Hex Head Screw |
| 2-8 | 49519 | 49519 | 49519 | Front Glass, Tempered |
| 2-9 | 49518 | 49518 | 49518 | Side Glass, Tempered |
| 2-10 | 49506 | 49506 | 49506 | Bottom Corn Pan |
| 2-11 | 49091 | 49091 | 49091 | Wire Duct |
| 2-12 | 49450 | 49452 | 49452 | Top Pan |
| 2-13 | 49145 | 49145 | 49145 | Drop Panel |
| 2-14 | 49097 | 49166 | 49166 | Bottom Pan |
| 2-15 | 49100 | 49100 | 49100 | Old Maid Pan |
| 2-16 | 49425 | 49425 | 49425 | Strip Heater Bracket |
| 2-17 | 49104 | 49104 | 49104 | Cover, Corner Cover |
| 2-18 | 49105 | 49105 | 49105 | Corner Cover |
| 2-19 | 49605 | 49514 | 49514 | Right Rear Corner Post |
| 2-20 | 49603 | 49513 | 49513 | Left Rear Corner Post |
| 2-21 | 49607 | 49516 | 49516 | Left Front Corner Post |
| 2-22 | 49608 | 74164 | 74164 | Glass Extrusion 16 9/32" LG (2 Req) |
| 2-23 | 76026 | 76026 | 76026 | Strain Relief #SR-6P3-4 |
| 2-24 | 77506 | 49158 | 49158 | Decal, Front Glass |
| 2-25 | 49123 | 49123 | 49123 | Crutch Tip |
| 2-26 | 49606 | 49515 | 49515 | Right Front Corner Post |
| 2-27 | 41359 | 41359 | 41359 | Left Female Hinge NM |
| 2-28 | 41360 | 41360 | 41360 | Left Male Hinge NM |
| | 41373 | 41373 | 41373 | Right Female Hinge NM * |
| | 41374 | 41374 | 41374 | Right Male Hinge NM * |
| 2-29 | 47702 | 47702 | 47702 | #8-32 Acorn Nut |
| 2-30 | 74141 | 74141 | 74141 | #8-32 x 1/2" Panhead Phillips |
| 2-31 | 49379 | 49379 | 49379 | #8-32 x 1/2" Hex Head |
| | 77095 | 77095 | 77095 | Neoprene Washer * |
| 2-32 | 74149 | 74149 | 74149 | #8-32 Hex Nut * |
| 2-33 | 74150 | 74150 | 74150 | #8 Internal Tooth Washer |
| 2-34 | 41019 | 41019 | 41019 | Universal Popper Decal |
| 2-35 | 75267 | 75267 | 75267 | Tee Bolt |

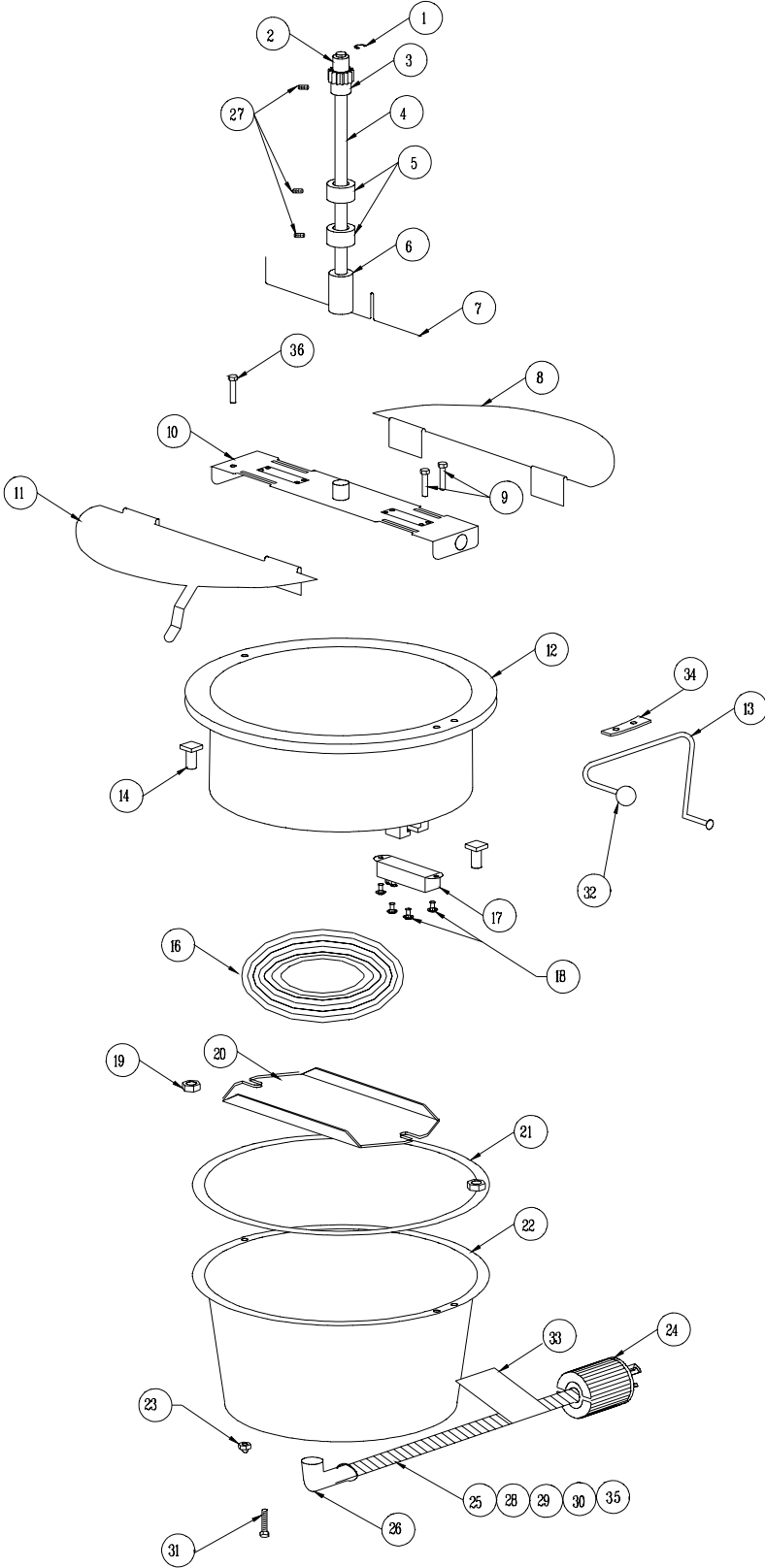
* Not Shown

PARTS LIST CABINET ASSEMBLY

| Item No. | Model #1866EX | Model #2656EX | Model #2656JX | Description |
|----------|------------------|------------------|------------------|---|
| | Part No. | Part No. | Part No. | |
| 2-36 | 47120 | 47120 | 47120 | Knob |
| 2-37 | 49059 | 49509 | 49509 | Rigid Glass Channel 21 5/8" LG. (6 Req) * |
| 2-38 | 49510 | 49510 | 49510 | Rigid Glass Channel 15" LG (4 Req) * |
| 2-39 | 49511 | 49511 | 49511 | Rigid Glass Channel 17" LG (2 Req) * |
| 2-40 | 49602 | 49508 | 49508 | Glass Extrusion 14 9/32" LG (4 Req) |

* Not Shown

6 oz. KETTLE ASSEMBLY



PARTS LIST

6 oz. KETTLE ASSEMBLY

Models #2085EX and #2086EX

| Item No. | Part No. | Description |
|----------|----------|---------------------------------|
| | 49326EX | 6 Oz. Kettle Complete |
| | 49424EX | 6 Oz. Lid & Agitator Assembly |
| | 49327EX | 6 Oz. Kettle Bottom Only |
| 1 | 49701 | External Snap Ring |
| 2 | 47106 | Needle Bearing |
| 3 | 47060 | Spur Gear |
| 4 | 49423 | Agitator Shaft Assembly |
| 5 | 46649 | Set Collar |
| 6 | 49013 | Agitator Weight |
| 7 | 49011 | Stir Rod |
| 8 | 49016 | Rear Kettle Lid |
| 9 | 89125 | Screw #8-32 x 3/4" Hex HD |
| 10 | 49356EX | Crossbar Assembly |
| 11 | 49017 | Front Lid With Lifter |
| 12 | 49312 | Kettle Welded Assembly |
| 13 | 49314 | Dump Handle RH |
| 14 | 49446 | Bolt 5/16 -18 x 5/8 " Square HD |
| 16 | 46652EX | Heat Element 850W |
| 17 | 76089 | Thermostat |
| 18 | 49136 | Screw #6-32 x 3/16 " Pan HD MS |
| 19 | 49317 | 5/16 -18 Serrated Lock Nut |
| 20 | 49532 | Element Retainer Bracket |
| 21 | 49368 | Kettle Gasket |
| 22 | 49431 | Kettle Shell |
| 23 | 47702 | Acorn Nut #8-32 |
| 24 | 49329 | Kettle Plug |
| 25 | 77079-16 | Flexible Conduit |
| 26 | 46241 | 90 Degree Connector |
| 27 | 41742 | Set Screw #10-32 x 3/16" (3) |
| 28 | 49492 | Red Kettle Wire Assembly |
| 29 | 49493 | White Kettle Wire Assembly |
| 30 | 49494 | Green Kettle Wire Assembly |
| 31 | 49376 | Screw #10-32 x 1" |
| 32 | 47110 | Knob, Dump Handle |
| 33 | 49350 | Caution Label |
| 34 | 49362 | Dump Handle Spacer |
| 35 | 77080NM | Bushing, Conduit |
| 36 | 47141 | #8-32 X 1/2" Screw |
| 37 | 49490 | Kettle Lead-In Cord Assembly * |

* Includes Item No. 24-26, 28-31, 33, and 35

PARTS LIST

6 oz. KETTLE ASSEMBLY

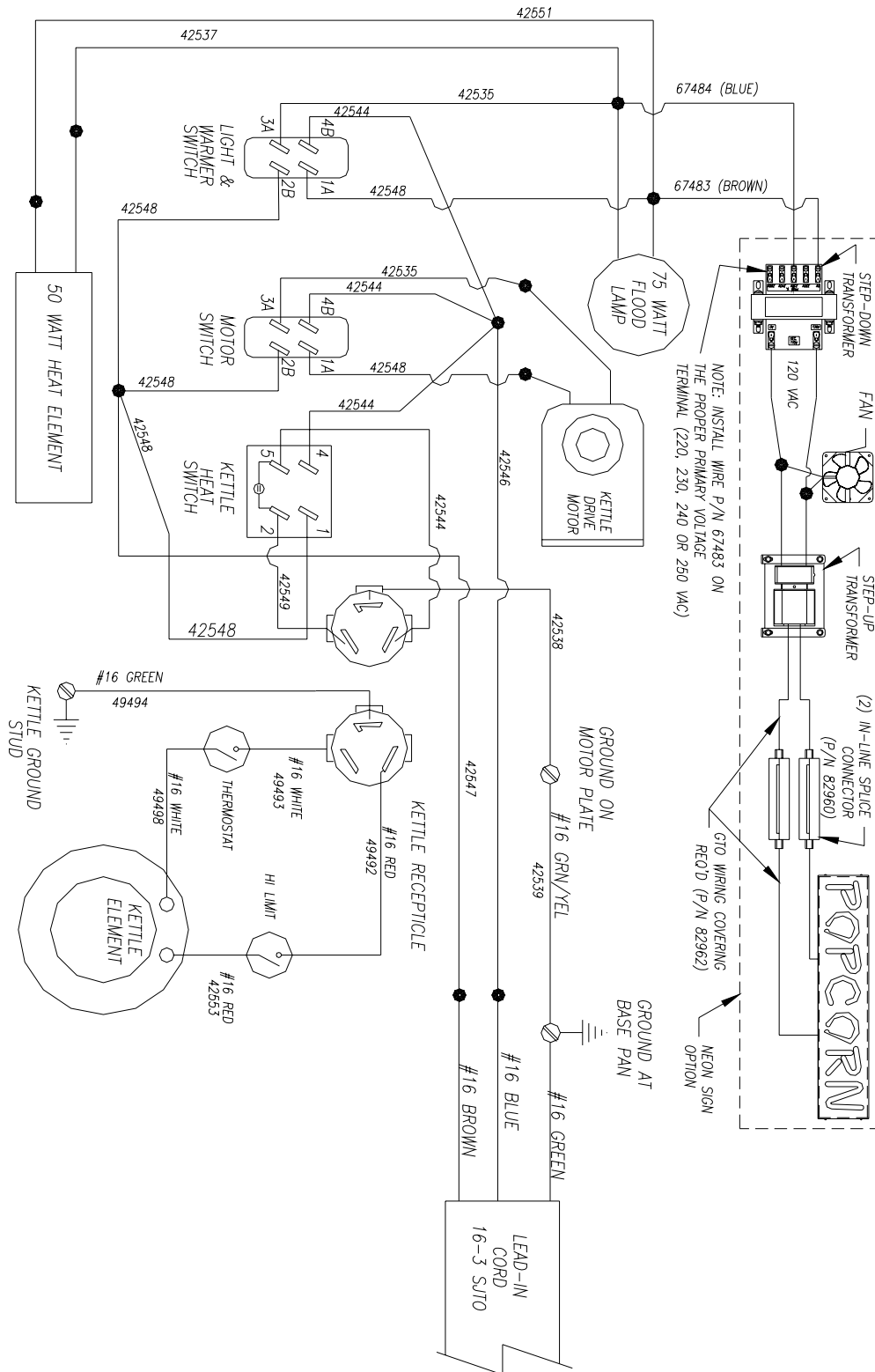
Models #1866EX, #2656EX, and #2656JX

| Item No. | 230 Volt Part No. | 100 Volt Part No. | Description |
|----------|----------------------|----------------------|---------------------------------|
| | 49434EX | 49434JX | 6 Oz. Kettle Complete |
| | 49435EX | 49435JX | 6 Oz. Lid & Agitator Assembly |
| | 49433EX | 49433JX | 6 Oz. Kettle Bottom Only |
| 1 | 49701 | 49701 | External Snap Ring |
| 2 | 47106 | 47106 | Needle Bearing |
| 3 | 47060 | 47060 | Spur Gear |
| 4 | 49423 | 49423 | Agitator Shaft Assembly |
| 5 | 46649 | 46649 | Set Collar |
| 6 | 49013 | 49013 | Agitator Weight |
| 7 | 49011 | 49011 | Stir Rod |
| 8 | 49016 | 49016 | Rear Kettle Lid |
| 9 | 89125 | 89125 | Screw #8-32 x 3/4" Hex HD |
| 10 | 49471EX | 49471JX | Crossbar Assembly |
| 11 | 49017 | 49017 | Front Lid With Lifter |
| 12 | 49432 | 49432 | Kettle Welded Assembly |
| 13 | 49314 | 49314 | Dump Handle RH |
| 14 | 49446 | 49446 | Bolt 5/16 -18 x 5/8 " Square HD |
| 16 | 46652EX | 48739 | Heat Element 850W |
| 17 | 76089 | 47676 | Thermostat |
| 18 | 49136 | 49136 | Screw #6-32 x 3/16 " Pan HD MS |
| 19 | 49317 | 49317 | 5/16 -18 Serrated Lock Nut |
| 20 | 49532 | 49532 | Element Retainer Bracket |
| 21 | 49368 | 49368 | Kettle Gasket |
| 22 | 49431 | 49431 | Kettle Shell |
| 23 | 47702 | 47702 | Acorn Nut #8-32 |
| 24 | 49329 | 49329 | Kettle Plug |
| 25 | 77079-16 | 77079-16 | Flexible Conduit |
| 26 | 46241 | 46241 | 90 Degree Connector |
| 27 | 41742 | 41742 | Set Screw #8-32 x 3/8 " |
| 28 | 49492 | 49492 | Red Kettle Wire Assembly |
| 29 | 49493 | 49493 | White Kettle Wire Assembly |
| 30 | 49494 | 49494 | Green Kettle Wire Assembly |
| 31 | 49376 | 49376 | Screw #10-32 x 1" |
| 32 | 47110 | 47110 | Knob, Dump Handle |
| 33 | 49350 | 49350 | Caution Label |
| 34 | 49362 | 49362 | Dump Handle Spacer |
| 35 | 77080NM | 77080NM | Bushing, Conduit |
| 36 | 47141 | 47141 | #8-32 x 1/2" Screw |
| 37 | 49490 | 49490 | Kettle Lead-In Cord Assembly * |

* Includes Item No. 24-26, 28-31, 33, and 35

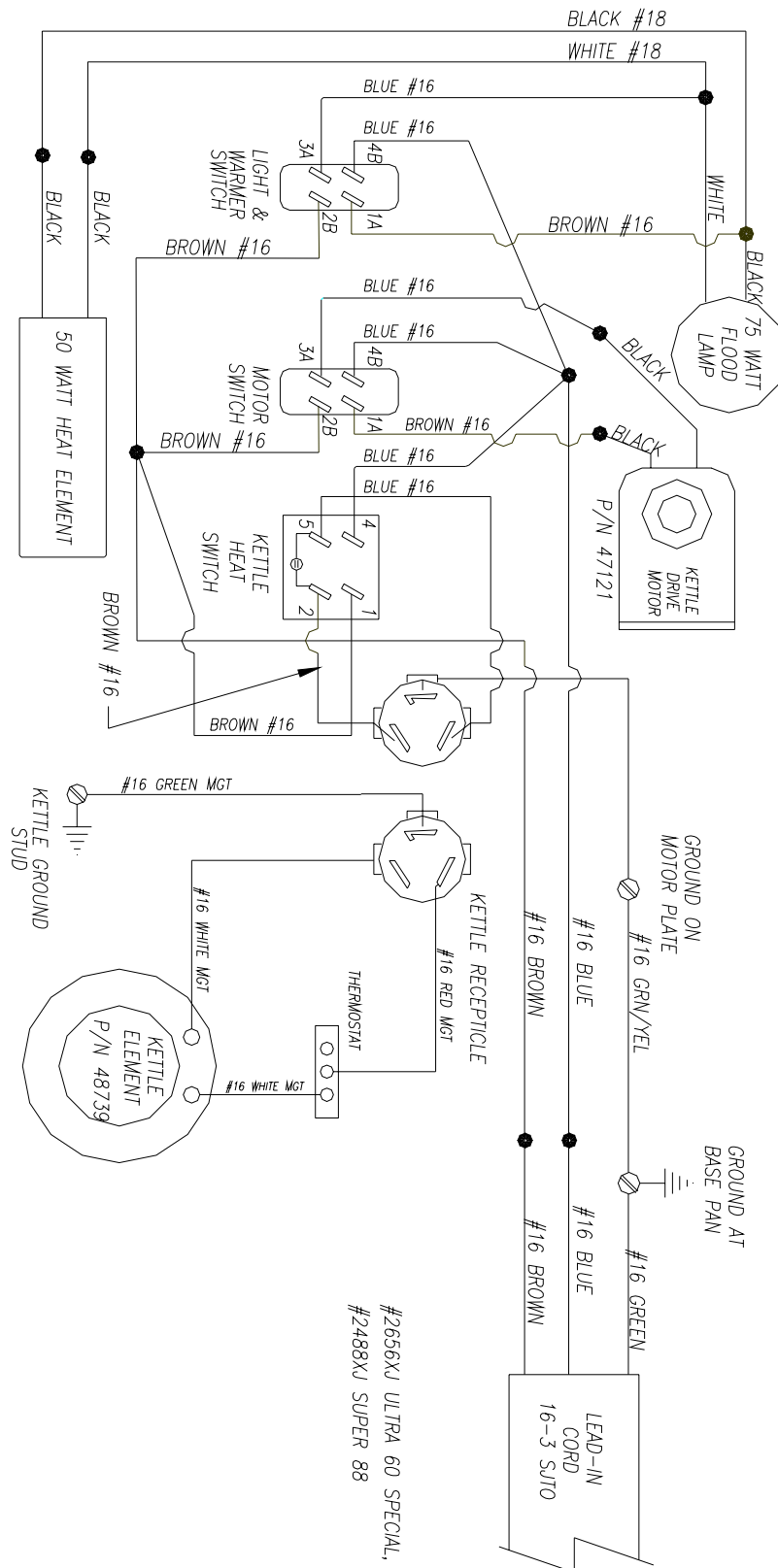
ELECTRICAL SCHEMATIC

This wiring diagram is for 230 Volt.



ELECTRICAL SCHEMATIC

This wiring diagram for 100 Volt.



WARRANTY

WE WARRANT to the original purchaser the Gold Medal equipment sold by us to be free from defects in material or workmanship under normal use and service. Our obligation under this warranty shall be limited to the repair or replacement of any defective part for a period of six (6) months from the date of sale to the Original Purchaser with regard to labor and two (2) years with regard to parts and does not cover damage to the equipment caused by accident, alteration, improper use, voltage, abuse, or failure to follow instructions.

THIS WARRANTY IS IN LIEU OF ALL OTHER WARRANTIES EXPRESSED OR IMPLIED, AND OF ALL OTHER OBLIGATIONS OR LIABILITIES ON OUR PART, INCLUDING THE IMPLIED WARRANTY OF MERCHANTABILITY. THERE ARE NO WARRANTIES WHICH EXTEND BEYOND THE DESCRIPTION ON THE FACE HEREOF. We neither assume, nor authorize any other person to assume for us, any other obligation or liability in connection with the sale of said GOLD MEDAL equipment or any part thereof.

The term "Original Purchaser" as used in this warranty shall be deemed to mean that person, firm, association, or corporation who was billed by the GOLD MEDAL PRODUCTS COMPANY, or their authorized distributor for the equipment.

THIS WARRANTY HAS NO EFFECT AND IS VOID UNLESS THE ORIGINAL PURCHASER FIRST CALLS GOLD MEDAL PRODUCTS COMPANY AT 1-800-543-0862 TO DISCUSS WITH OUR SERVICE REPRESENTATIVE THE EQUIPMENT PROBLEM, AND, IF NECESSARY, FOR INSTRUCTIONS CONCERNING THE REPAIR OR REPLACEMENT OF PARTS.

NOTE: This equipment is manufactured and sold for commercial use only.



GOLD MEDAL PRODUCTS COMPANY
10700 Medallion Drive
Cincinnati, Ohio 45241-4807 USA